



Smove
SALICE



D0S_SNG

page 4



D0L_SNG

page 9



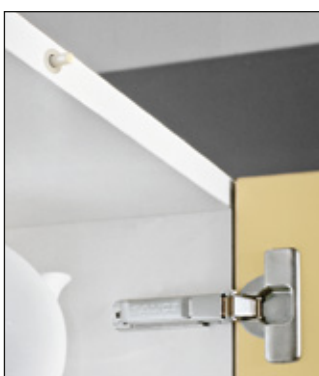
DB01SN_

page 11



D005SN

page 12



D006SN

page 13



D008SN

page 14



D009SN
D010SN

page 15
page 16



Adapters to be screw fixed to the cabinet

page 19



Adapters with double sided adhesive system

page 22

Smove is the innovative system used to soften the closing action of any door.

It can be installed to all cabinet applications and offers optimal performance.



D0S_SNG - Smoveholder



We suggest that one Smoveholder only is used for each door, by selecting one of the three available models:



D0S7SNG

to be used with **doors made with particularly light materials.**



D0S8SNG

to be used with **doors with two hinges.**



D0S9SNG

to be used with **doors with more than two hinges.**

Packing

Boxes 300 pcs
Pallets 7.200 pcs

Adapter for hinges with arm 0



Adapter to be used ONLY with cruciform mounting plates 37x 32 mm.
For use with mounting plates to be fixed with wood screw, please use a screw with screwhead \varnothing 8 mm and length 16 mm.

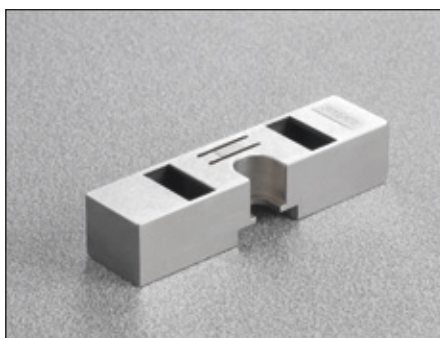
D2VX09 - for steel mounting plates

DARX09 - for die-cast mounting plates

Packing

Boxes 300 pcs
Pallets 7.200 pcs

Adapter for hinges with arm 5



Adapter to be used ONLY with cruciform mounting plates 37x 32 mm.
For use with mounting plates to be fixed with wood screw, please use a screw with screwhead \varnothing 8 mm and length 16 mm.

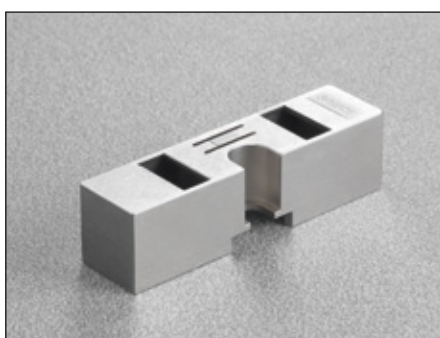
D2VX59 - for steel mounting plates

DARX59 - for die-cast mounting plates

Packing

Boxes 300 pcs
Pallets 7.200 pcs

Adapter for hinges with arm 9



Adapter to be used ONLY with cruciform mounting plates 37x 32 mm.
For use with mounting plates to be fixed with wood screw, please use a screw with screwhead \varnothing 8 mm and length 16 mm.

D2VX99 - for steel mounting plates

DARX99 - for die-cast mounting plates

Packing

Boxes 300 pcs
Pallets 7.200 pcs

Adapter for hinges with arm 17



Adapter to be used ONLY with cruciform mounting plates 37x 32 mm.
For use with mounting plates to be fixed with wood screw, please use a screw with screwhead \varnothing 8 mm and length 16 mm.

D2VXP9 - for steel mounting plates

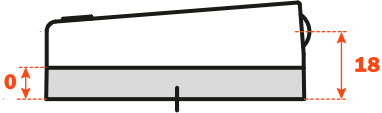
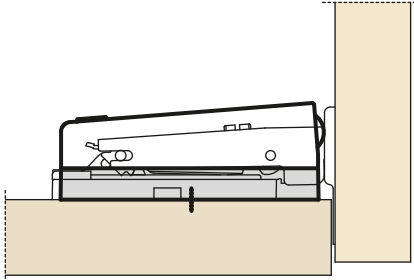
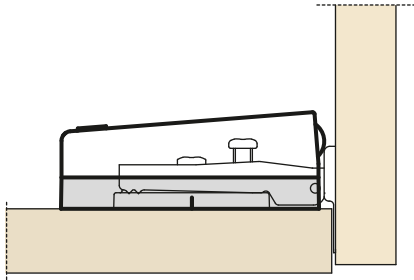
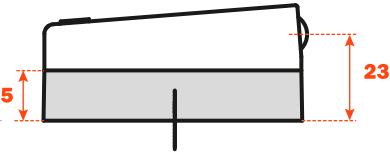
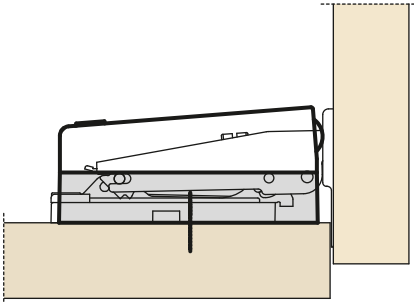
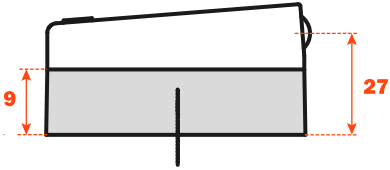
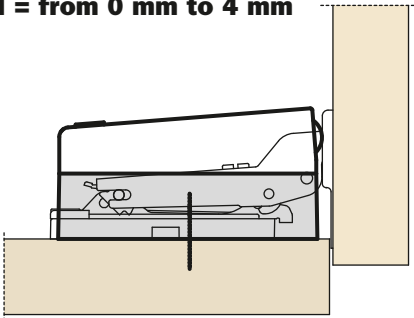
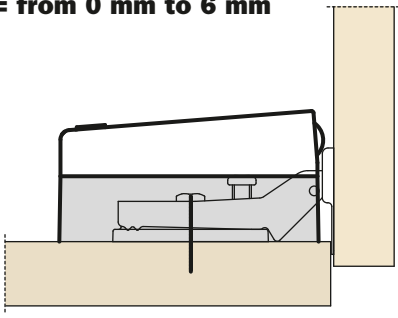
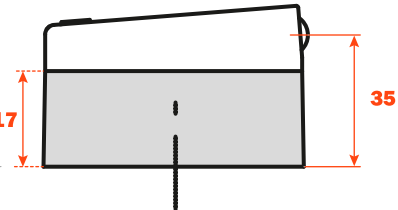
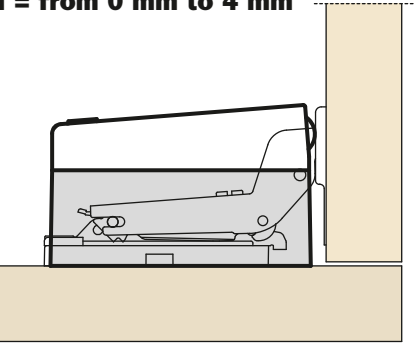
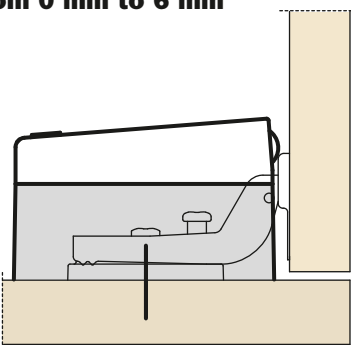
DARXP9 - for die-cast mounting plates

Packing

Boxes 150 pcs
Pallets 3.600 pcs

Smove - DOS_SNG - Choice of the adapter

Smove works by bearing against the flange of the hinge cup and for this reason it is necessary to choose the appropriate adapter. By reducing the door overlay, it is necessary consequently to increase the height of the adapter.

	FOR HINGES SERIES 100, 200, 800 AND 900	FOR HINGES SERIES 400 AND 600
ADAPTER HEIGHT = 0 	For mounting plates H = from 0 mm to 4 mm 	For mounting plates H = from 0 mm to 6 mm 
ADAPTER HEIGHT = 5 	For mounting plates H = from 0 mm to 4 mm 	
ADAPTER HEIGHT = 9 	For mounting plates H = from 0 mm to 4 mm 	For mounting plates H = from 0 mm to 6 mm 
ADAPTER HEIGHT = 17 	For mounting plates H = from 0 mm to 4 mm 	For mounting plates H = from 0 mm to 6 mm 

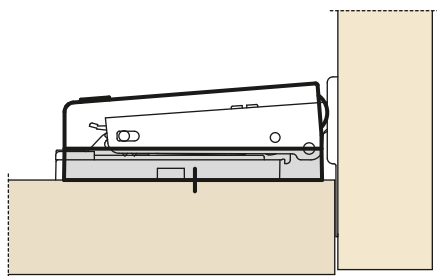
FOR HINGES SERIES F

FOR HINGES SERIES B

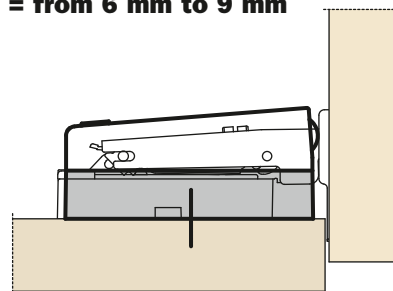
The required overlay can be achieved not only by using the appropriate hinge arm, but also by using mounting plates of different heights.

Application examples:

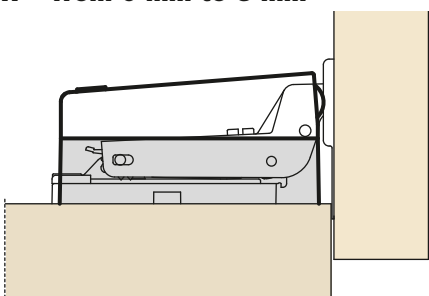
**For mounting plates
H = from 0 mm to 3 mm**



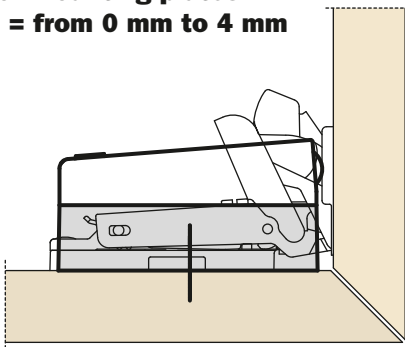
**Arm 0
For mounting plates
H = from 6 mm to 9 mm**



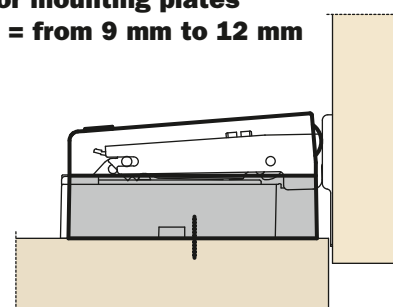
**For mounting plates
H = from 0 mm to 3 mm**



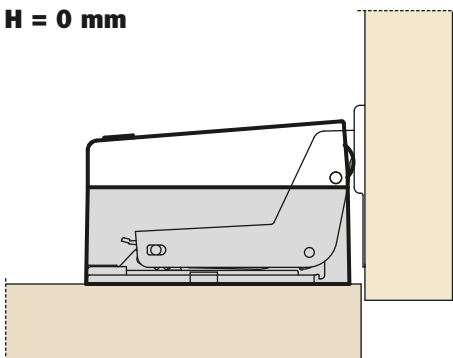
**For mounting plates
H = from 0 mm to 4 mm**



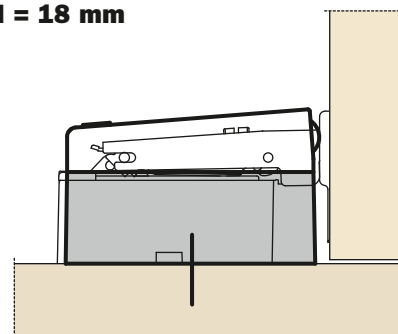
**Arm 0
For mounting plates
H = from 9 mm to 12 mm**



**For mounting plates
H = 0 mm**



**Arm 0
For mounting plates
H = 18 mm**



1 - Loosen one of the two fixing screws of the mounting plate.



2 - Insert the adapter for the Smoveholder.



3 - Retighten the fixing screw of the mounting plate.



4 - Apply the Smoveholder to the adapter, as indicated.



5 - Finally it is possible to adjust the Smove to increase or reduce the decelerating effect.



Positive adjustment

Rotating the screw towards the + sign, thus moving the Smove forward, the decelerating effect increases.

Negative adjustment

Rotating the screw towards the - sign, thus moving the Smove backwards, the decelerating effect reduces.





D0L_SNG - Smoveholder with assembly stop devices



We suggest that one smoveholder only is used for each door, by selecting one of the three available models:



D0L7SNG
to be used with **doors made with particularly light materials.**



D0L8SNG
to be used with **doors with two hinges.**



D0L9SNG
to be used with **doors with more than two hinges.**

Packing

Boxes 150 pcs
Pallets 13.500 pcs

D0L_SNGR - Smoveholder without assembly stop devices



We suggest that one smoveholder only is used for each door, by selecting one of the three available models:



D0L7SNGR
to be used with **doors made with particularly light materials.**



D0L8SNGR
to be used with **doors with two hinges.**



D0L9SNGR
to be used with **doors with more than two hinges.**

Packing

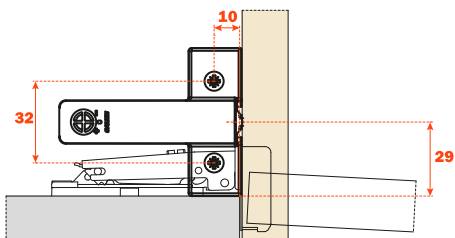
Boxes 150 pcs
Pallets 13.500 pcs

Smoveholder application

Arm 0, Arm 5, Arm 9 - Smoveholder DOL_SNG

Frontal positioning: with assembly stop devices.

Side positioning: place the smoveholder with its wing in contact with the side of the cabinet.

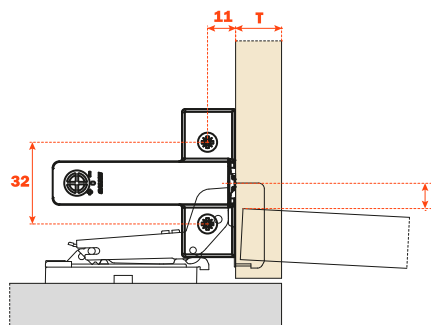


1 - Place the smoveholder in position on the top or bottom panel with its wing in contact with the side of the cabinet.

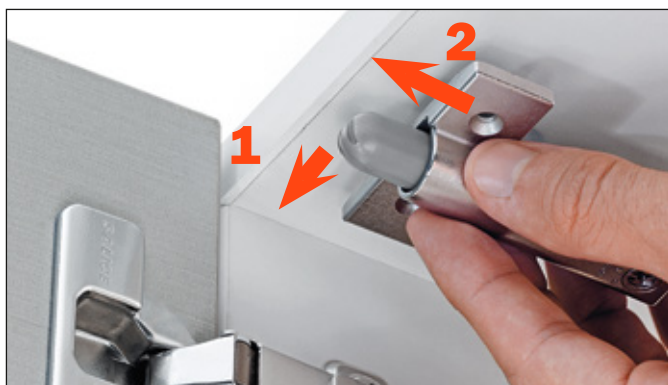
Arm 17 - Smoveholder DOL_SNGR

Frontal positioning: drilling value at + 11 mm plus the door thickness.

Side positioning: place the smoveholder with its centreline approx. 5 mm from the edge of the door at its fully open position.



2 - Screw the smoveholder into position.



3 - Finally it is possible to adjust the Smove to increase or reduce the decelerating effect.



Positive adjustment

Rotating the screw towards the + sign, thus moving the Smove forward, the decelerating effect increases.

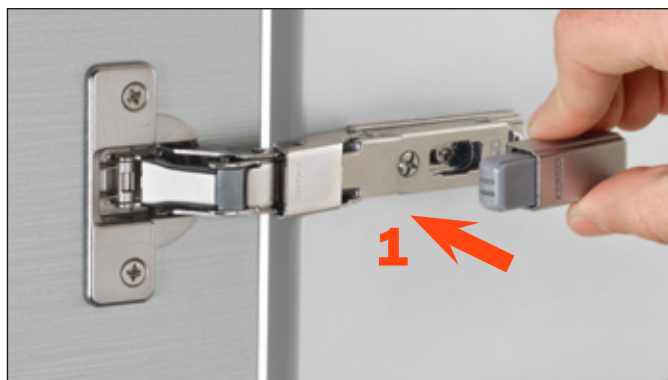


Negative adjustment

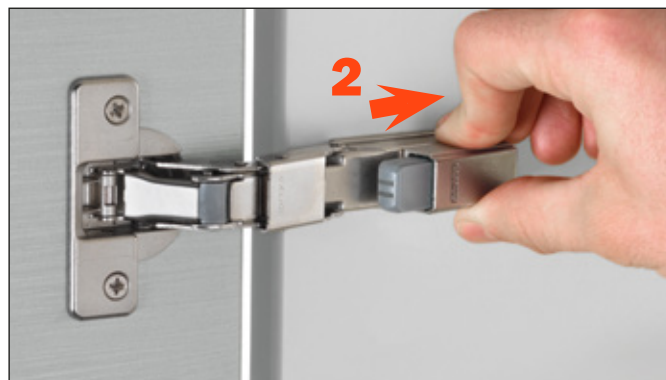
Rotating the screw towards the - sign, thus moving the Smove backwards, the decelerating effect reduces.



1 - Apply Smove to the hinge arm



2 - Fix Smove as indicated



D005SNG



Smove

Packing

Boxes 250 pcs.
Cartons 2.000 pcs.

D005SNB



Smove

Packing

Boxes 250 pcs.
Cartons 2.000 pcs.

Technical information about the installation of SMOVE D005SN to be recessed

Insert Smove D005 into the cabinet side opposite the hinges. For an optimal performance, we suggest that Smove D005 is positioned at the centre of the side panel.

It is suggested for doors from 450 mm to 600 mm width.

For wood-based and alu-framed doors over 1600 mm height, it may be necessary to use two Smove, one to be inserted into the upper part and the second into the lower part of the cabinet side opposite the hinges.



D006SNG



Smove

Packing

Boxes 250 pcs.
Cartons 2.000 pcs.

D006SNB



Smove

Packing

Boxes 250 pcs.
Cartons 2.000 pcs.

Technical information about the installation of SMOVE D006SN to be recessed

Insert Smove D006 at the centre of the top or the base panel of the cabinet.

For wood-based and alu-framed doors over 1600 mm height, it may be necessary to use two Smove, one to be inserted into the top and the second into the base panel of the cabinet.



D008SNG

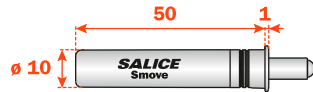


Smove

Packing

Boxes 250 pcs.
Cartons 2.000 pcs.

D008SNB



Smove

Packing

Boxes 250 pcs.
Cartons 2.000 pcs.

Technical information about the installation of SMOVE D008SN to be recessed

Insert Smove D008 into the top or the base panel of the cabinet on the hinged side.

A drilling distance of 27 mm from the cabinet side is suggested.

For doors over 1600 mm height, it may be necessary to use two Smove, one to be inserted into the top and the second into the base panel of the cabinet.



D009SNG



Smove

Packing

Boxes 250 pcs.
Cartons 2.000 pcs.

D009SNB



Smove

Packing

Boxes 250 pcs.
Cartons 2.000 pcs.

Technical information about the installation of SMOVE D009SN to be recessed

Insert Smove D009 into the base panel of the cabinet on the hinged side.

Smove D009 is used for doors between 720 mm and 1600 mm high.

Drilling distance from the cabinet side:

- for hinges with **arm 0** mm the drilling distance equals **15 mm** plus the base height;
- for hinges with **arm 5** mm the drilling distance equals **20 mm** plus the base height;
- for hinges with **arm 9** mm the drilling distance equals **24 mm** plus the base height.



D010SNG



Smove

Packing

Boxes 250 pcs.
Cartons 2.000 pcs.

D010SNB



Smove

Packing

Boxes 250 pcs.
Cartons 2.000 pcs.

Technical information about the installation of SMOVE D010SN to be recessed

Insert Smove D010 into the base panel of the cabinet on the hinged side.

Smove D010 is used for doors over 1600 mm high.

Drilling distance from the cabinet side:

- for hinges with **arm 0** mm the drilling distance equals **15 mm** plus the base height;

- for hinges with **arm 5** mm the drilling distance equals **20 mm** plus the base height;

- for hinges with **arm 9** mm the drilling distance equals **24 mm** plus the base height.



To be recessed - Assembly instructions

Drill a hole \varnothing 10 mm and min. 50 mm depth in the cabinet.
Insert Smove into the hole.



Technical information about the installation of SMOVE with adapter



SMOVE D005 can be fitted using:

- 1) adapters to be screw-fixed to the cabinet side (see pages 19 and 20);
- 2) adapters with double sided adhesive system (see page 22).

It is suggested for doors from 450 mm to 600 mm width.

For wood-based and alu-framed doors over 1600 mm height, it may be necessary to use two Smove, one to be fixed to the upper part and the second to the lower part of the cabinet side opposite the hinges.

SMOVE D006 can be fitted using:

- 1) adapters to be screw-fixed to the top or bottom panel of the cabinet (see pages 19 and 20);
- 2) adapters with double sided adhesive system (see page 22).

For wood-based and alu-framed doors over 1600 mm height, it may be necessary to use two Smove, one to be fixed to the top and the second to the base panel of the cabinet.



SMOVE D008 can be fitted using:

- 1) adapters to be screw-fixed to the top or bottom panel of the cabinet (see pages 19 and 20); Smove should be positioned at a distance of 27 mm from the inside face of the cabinet side. If using cruciform adapters, the correct position is located by moving the adapters so that one wing is in contact with the inside face of the cabinet.
- 2) adapters with double sided adhesive system (see page 22).

For doors over 1600 mm height, it may be necessary to use two Smove, one to be fixed to the top and the second to the base panel of the cabinet.

- 3) adapters to be screw-fixed to the inside of the cabinet door (see page 24).

D008 is used for doors up to 720 mm high.



SMOVE D009 and D010 can be fitted using:

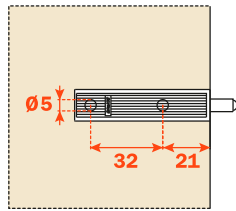
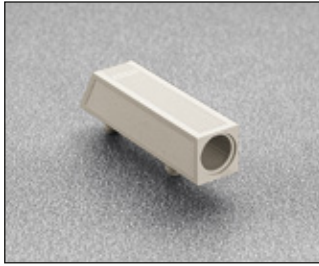
- 1) longitudinal adapters to be screw-fixed to the base panel of the cabinet (see pages 19 and 20);
- 2) adapters to be screw-fixed to the inside of the cabinet door (see page 24).

D009 is used for doors between 720 mm and 1600 mm high.

D010 is used for doors over 1600 mm high.

Adapters to be screw fixed to the cabinet

D063SNXR

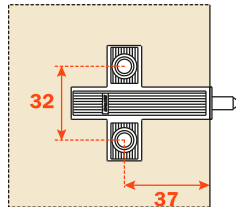


D063SNGR = grey
D063SNBR = beige

Longitudinal plastic adapter.
To be fixed with dowels.
Without assembly stop device.

Packing
Boxes 500 pcs.
Pallets 12.000 pcs.

D064SNXN

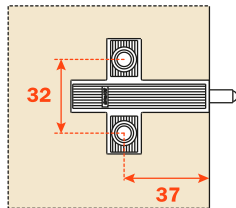


D064SNGN = grey
D064SNBN = beige

Cruciform plastic adapter.
To be fixed with wood screws.
37x32 mm drilling.
With assembly stop device.

Packing
Boxes 500 pcs.
Pallets 12.000 pcs.

D064SNXR



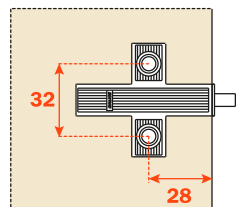
D064SNGR = grey
D064SNBR = beige

Cruciform plastic adapter.
To be fixed with wood screws.
37x32 mm drilling.
Without assembly stop device.

Packing
Boxes 500 pcs.
Pallets 12.000 pcs.

D065SNGR = grey - to be fixed with Euro screws.
D065SNBR = beige - to be fixed with Euro screws.

D060SNXN

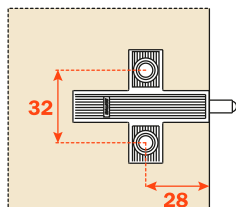


D060SNGN = grey
D060SNBN = beige

Cruciform plastic adapter.
To be fixed with wood screws.
28x32 mm drilling.
With assembly stop device.

Packing
Boxes 500 pcs.
Pallets 12.000 pcs.

D060SNXR

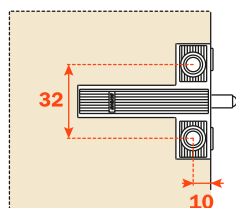
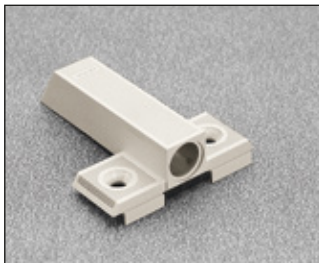


D060SNGR = grey
D060SNBR = beige

Cruciform plastic adapter.
To be fixed with wood screws.
28x32 mm drilling.
Without assembly stop device.

Packing
Boxes 500 pcs.
Pallets 12.000 pcs.

D066SNXN



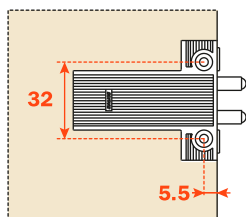
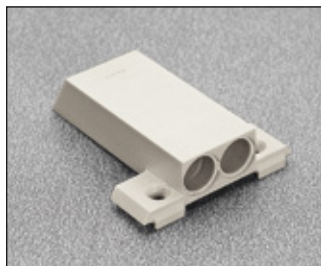
D066SNGN = grey
D066SNBN = beige

Cruciform plastic adapter.
To be fixed with wood screws.
10x32 mm drilling.
With assembly stop device.

Packing
Boxes 500 pcs.
Pallets 12.000 pcs.

SMOVE - Adapters to be screw fixed to the cabinet

D070SNXN

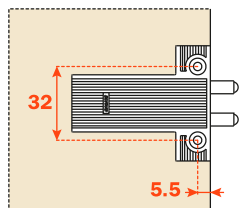
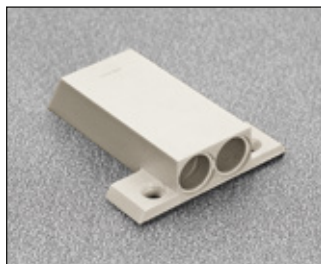


D070SNGN = grey
D070SNBN = beige

Double cruciform plastic.
To be fixed with wood screws.
5.5x32 mm drilling.
With assembly stop device.

Packing
Boxes 500 pcs.
Pallets 12.000 pcs.

D070SNXR

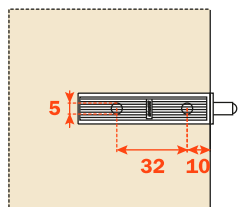


D070SNGR = grey
D070SNBR = beige

Double cruciform plastic.
To be fixed with wood screws.
5.5x32 mm drilling.
Without assembly stop device.

Packing
Boxes 500 pcs.
Pallets 12.000 pcs.

D076XX9R



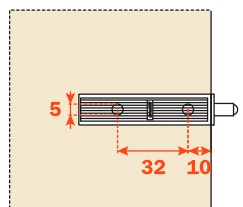
Longitudinal die-cast adapter.
To be fixed with wood screws.
Without assembly stop device.

Packing
Boxes 500 pcs.
Pallets 12.000 pcs.

Cover caps to be ordered separately.

D077XX9R - to be fixed with Euro screws.

D076SN9



Longitudinal die-cast adapter.
To be fixed with wood screws.
With assembly stop device.

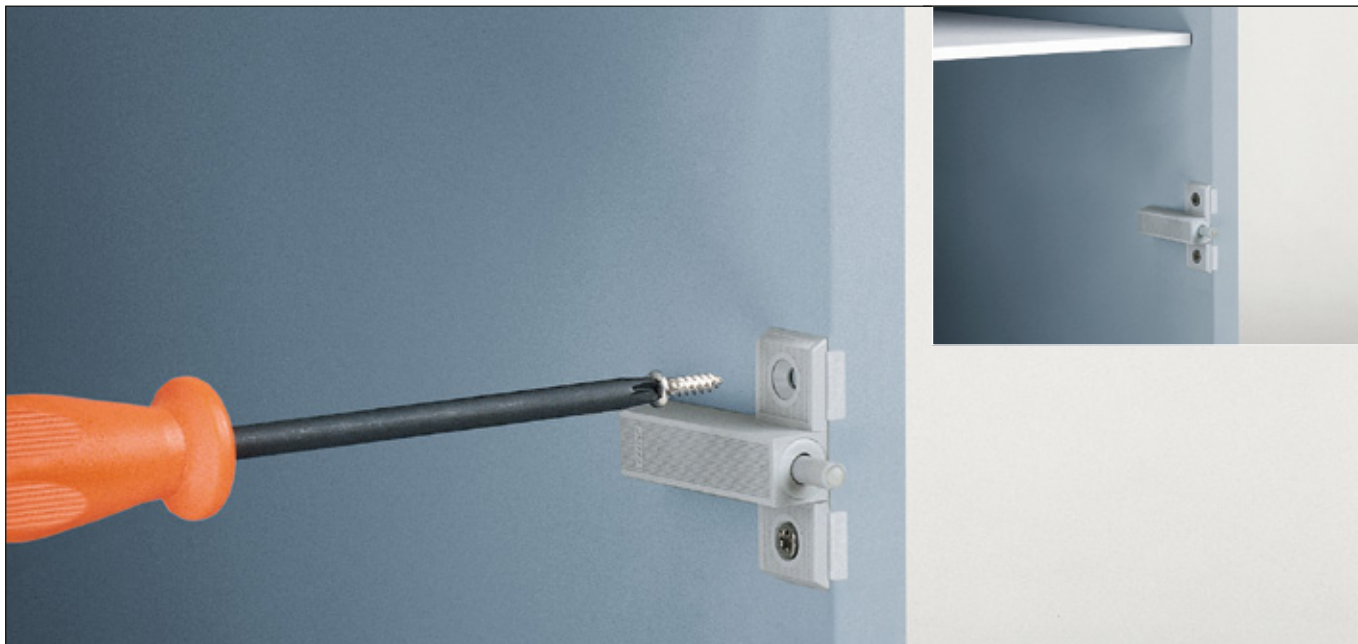
Packing
Boxes 500 pcs.
Pallets 12.000 pcs.

Cover caps to be ordered separately.

D077SN9 - to be fixed with Euro screws.

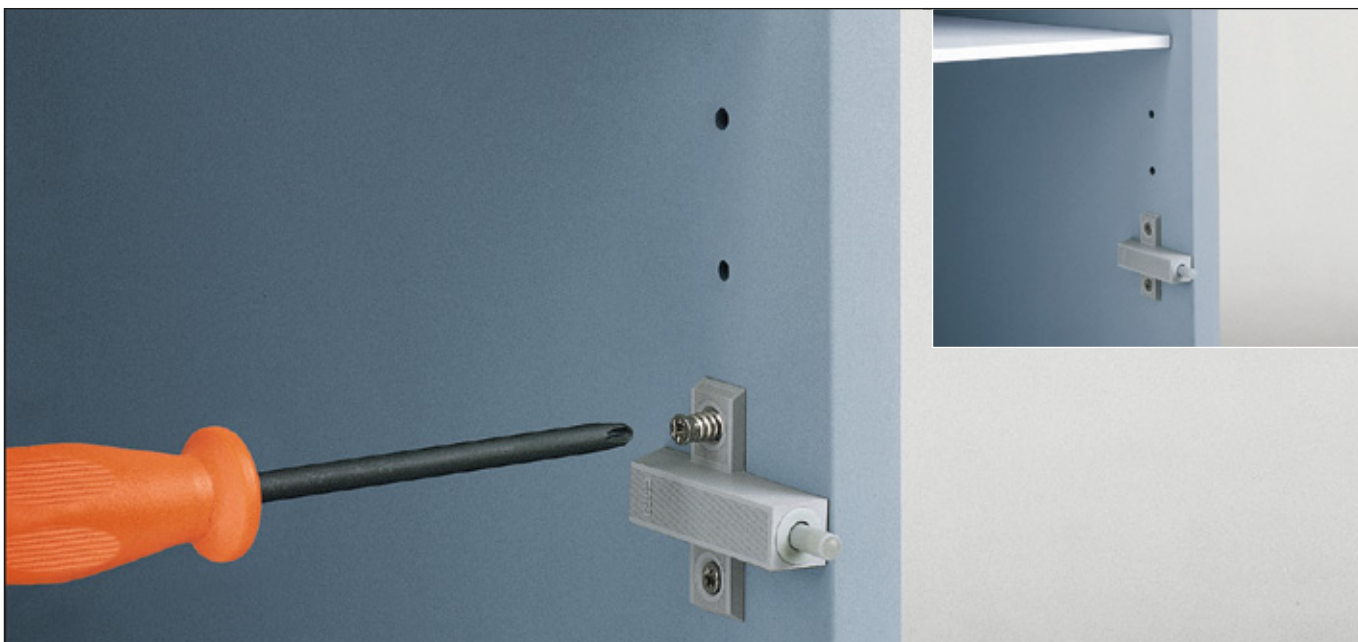
Adapter with assembly stop device

Insert Smove into the adapter. Place the adapter in the position in the cabinet appropriate to the version of Smove to be installed, using the assembly stop device for final positioning.



Adapter without assembly stop device

Insert Smove into the adapter. Place the adapter in the position in the cabinet appropriate to the version of Smove to be installed, based on the dimensions indicated for the type of adapter.



D051SNX

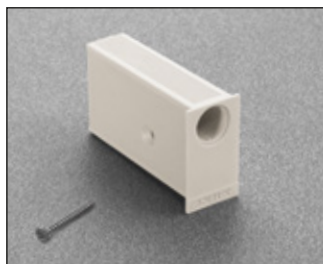


D051SNG = grey
D051SNB = beige

Longitudinal plastic.
With assembly stop device.

Packing
Boxes 500 pcs.
Pallets 12.000 pcs.

D086SNX



D086SNG = grey
D086SNB = beige

Longitudinal plastic with
additional fixing screw.
To be fixed with double sided
adhesive system.
It is suggested to fix the adapter
with the included screw.
For application with full
overlay door.
With assembly stop device

Packing
Boxes 500 pcs.
Pallets 12.000 pcs.

D087SNX



D087SNG = grey
D087SNB = beige

Longitudinal plastic with
additional fixing screw.
To be fixed with double sided
adhesive system.
It is suggested to fix the adapter
with the included screw.
For application with full and half
overlay door.
With assembly stop device.

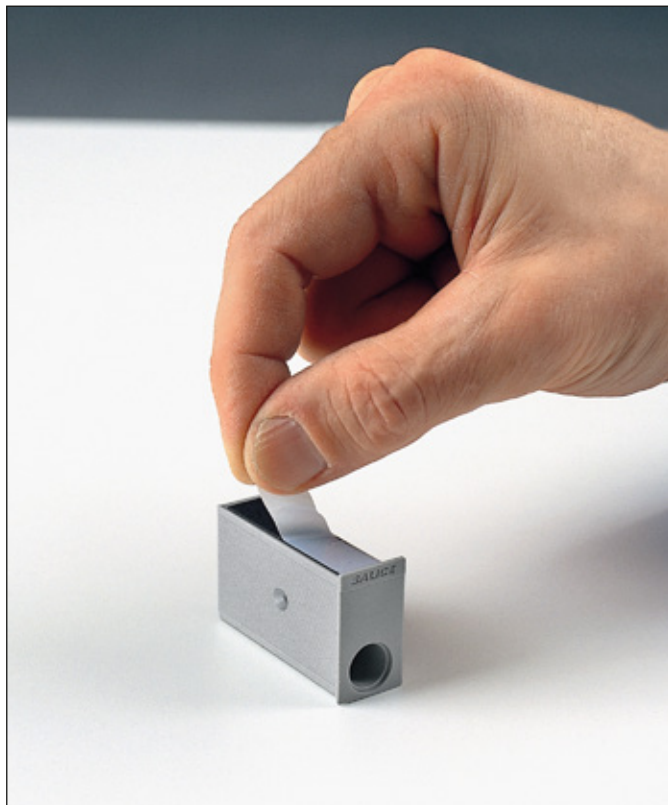
Packing
Boxes 500 pcs.
Pallets 12.000 pcs.

With adapter to be fixed with double sided adhesive system - Assembly instructions

For a correct application and to ensure optimal endurance, we suggest these guidelines are followed:

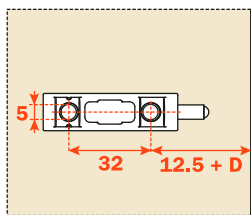
- 1) clean and de-grease the cabinet surface where the adapter is to be installed using an acetone based cleaner;
- 2) remove the protective strip from the adhesive;
- 3) place the adapter in position and apply a firm pressure for about one minute;
- 4) insert Smove frontally into the adapter;
- 5) allow a period of 12 hours to elapse before subjecting the product to continuous usage.

As an option for additional security, the adapters D086SNX and D087SNX can be fixed with the included wood screw.



Smove - Adapter to be screw fixed to the door

D078XX9



Longitudinal inclined die-cast adapter.
To be fixed with wood screws or Euroscrews.

Without assembly stop device.
It is suggested that the adapter is positioned near the centre of the height of the door.

Packing

Boxes 500 pcs.
Pallets 12.000 pcs.

Installation of Smove with adapter to be screw fixed to the door. Assembly instructions.

Insert Smove frontally into the adapter.

It is suggested that the adapter is positioned near the centre of the height of the door.



ARTURO SALICE S.p.A.

VIA PROVINCIALE NOVEDRATESE, 10
22060 NOVEDRATE (COMO) ITALIA
TEL. 031 790424
FAX 031 791508
info.salice@salice.com
www.salice.com

DEUTSCHE SALICE GMBH

RUDOLF DIESEL STR. 10
POSTFACH 1154
74382 NECKARWESTHEIM
TEL. 07133 9807-0
FAX. 07133 9807-16
info.salice@deutschesalice.de
www.deutschesalice.de

SALICE UK LTD.

KINGFISHER WAY
HINCHINGBROOKE BUSINESS PARK
HUNTINGDON CAMBS PE 29 6FN
TEL. 01480 413831
FAX. 01480 451489
info.salice@saliceuk.co.uk
www.saliceuk.co.uk

DEUTSCHE SALICE GMBH

VERKAUFSBÜRO NORD
RINGSTRASSE 36/A30 CENTER
32584 LÖHNE
TEL. 05731 15608-0
FAX. 05731 15608-10
vknord@deutschesalice.de
www.deutschesalice.de

SALICE AMERICA INC.

2123 CROWN CENTRE DRIVE
CHARLOTTE NC. 28227
TEL. 704 8417810
FAX. 704 8417808
info.salice@saliceamerica.com
www.saliceamerica.com

SALICE FRANCE S.A.R.L.

ROUTE DE GOA ZAC LES 3 MOULINS
06600 ANTIBES
TEL. 0493 330069
FAX. 0493 330141
info.salice@salicefrance.com
www.salicefrance.com

SALICE CANADA INC.

4025 SLADEVIEW CRESCENT
UNIT # 7-9
MISSISSAUGA, ONTARIO L5L 5Y1
TEL. 905 8208787
FAX. 905 8207226
info.salice@salicecanada.com
www.salicecanada.com

SALICE ESPAÑA, S.L.U.

CALLE COPÉRNICO, 11
POLÍGONO INDUSTRIAL
COLL DE LA MANYA
08403 GRANOLLERS (BARCELONA)
TEL. 938 46 88 61
FAX 938 49 11 97
info.salice@saliceespana.es
www.saliceespana.es